

NEXT STOP
ANNEX A
TECHNICAL SUPPORT MANUAL
(Metro Stations: Martim Moniz, Intendente, Anjos, Alameda)

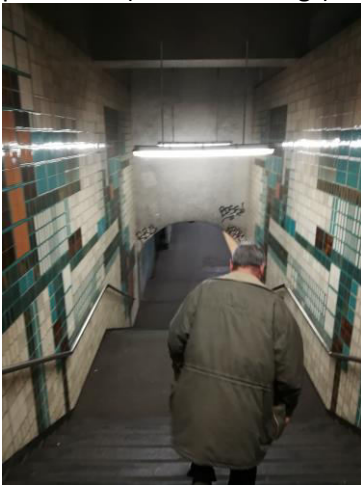
This document provides information on where artistic interventions may be carried out within the framework of the present project.

INTENDENTE Station

- **East Entrance** (Rua Andrade, Largo do Intendente, Hospital do Desterro, Rua dos Anjos)
- Passage corridor: wall zone above the mosaics

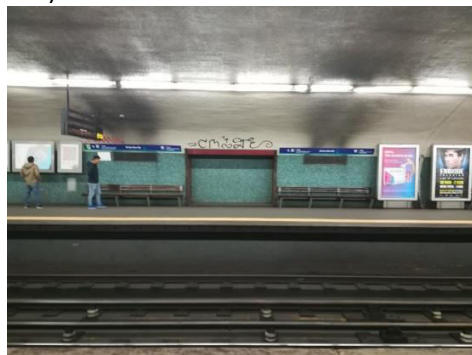


- Walls situated in the upper part of the arches below which are located the stairs of access to the platforms (crown moldings)



- **Platform**

- Two "niches" (one on each side of the lines)

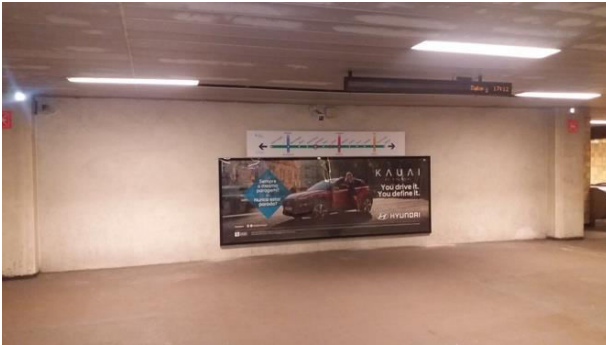


• **West Entrance** (Rua Luís Pinto Moutinho, Rua Álvaro Coutinho)

- Frames existing along the escalators can be used as supports for artistic pieces



- Spaces that flank the billboard on the large wall located at the entrance/exit lobby



- Very wide entrance / exit atrium allows the execution of interventions of varied typology



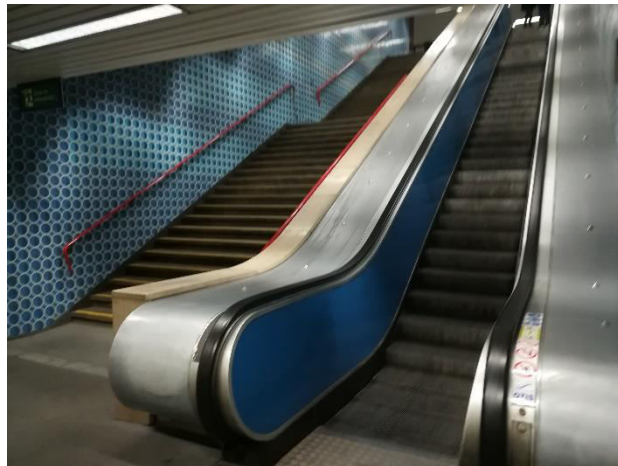
- Two shops on each side of the ticket office



ANJOS Station

- **West Entrance** (Rua Frei Francisco Foreiro, Rua Cidade de Liverpool)

- Interior corridor parallel to the platform: possibility of performing artistic interventions of varied typology



- Very large atrium at the top of the escalators allows the execution of interventions of varied typology



- **Platform:**

- Two "niches" (one on each side of the lines)



- **East Entrance** (Rua de Angola, Rua Febo Moniz)

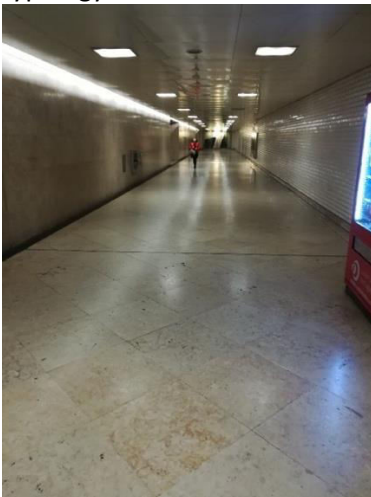
- Very wide atrium allows the performance of artistic interventions of varied typology



ALAMEDA Station

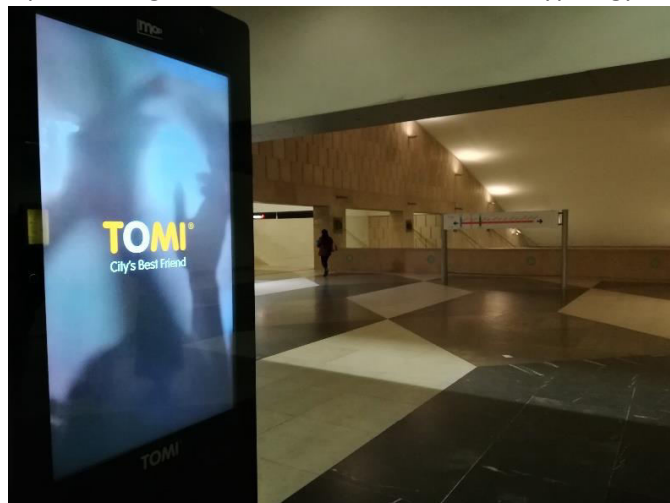
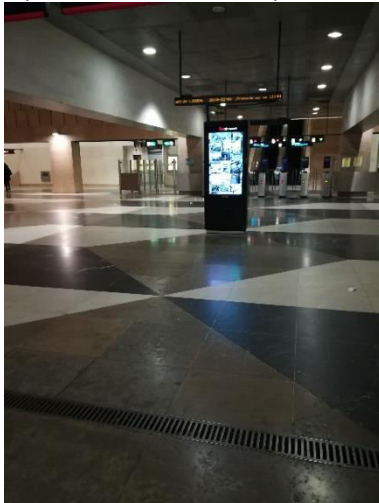
- **Platform**

- Interior corridor parallel to the platform: possibility of performing artistic interventions of varied typology



- **Intermediate Hall**

- Very wide area with the possibility of performing artistic interventions of varied typology



MARTIM MONIZ Station

- Single Entrance/Exit

- Atrium of limited area with the possibility of receiving artistic proposals that respect such constraints

